

ViewPoints :: Profile in Local Government

röös design + consulting

www.roosdesign-consulting.com

GIS Consulting
New Media

(847) 635-4752

City of Chicago

Local Government Solutions

118 North LaSalle Street, Chicago, IL

Client

City of Chicago, Office of Budget and Management

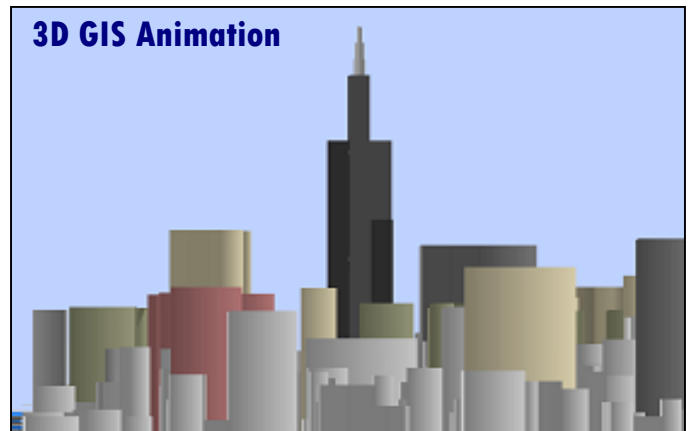
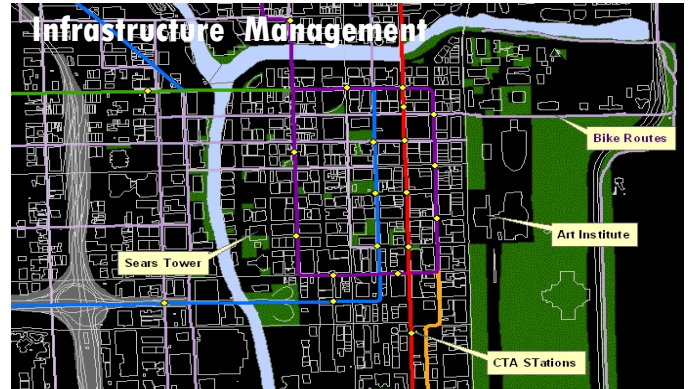
Project

The City of Chicago is a big place and managing its aging infrastructure is a big job. The Chicago Office of Budget and Management (OBM) is responsible for developing the City's Capital Improvement Program (CIP). To help manage CIP projects, the City looked to integrate GIS into its CIP Project Management System (CPMS). The CPMS integrates ESRI technology with Oracle Forms for managing the OMB's infrastructure projects.

The Solution

röös design + consulting was retained by ShivTech Information Technology Services, Chicago and India, and Environmental Services Research Institute (ESRI) Redlands, CA, to perform software QA/QC, defect testing, build an on-line help system using RoboHelp® Help Authoring, on-site software acceptance testing and provide training for OBM staff.

Using GIS for infrastructure management improves data management and improves coordination between departments.



röös design + consulting

Visit us on the Web: www.roosdesign-consulting.com/

Project Tasks

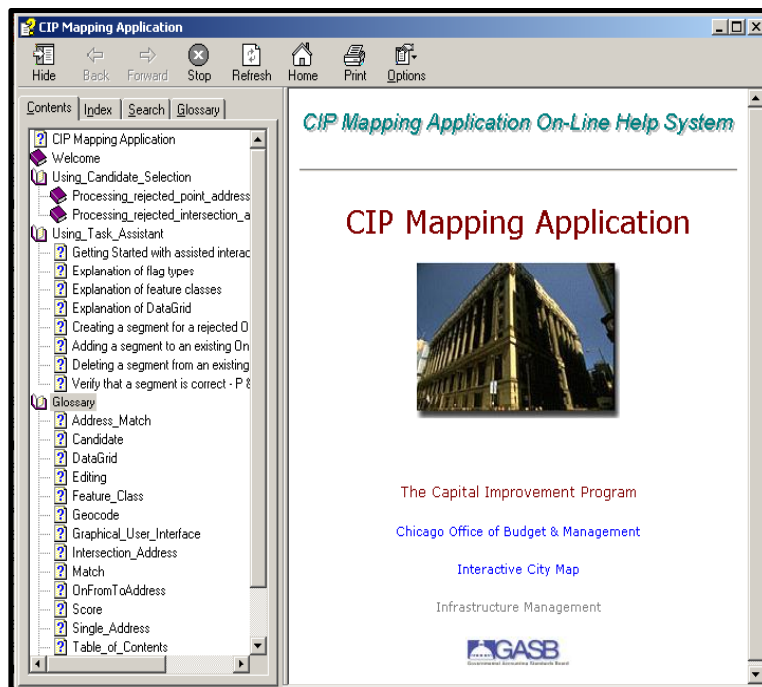
Task 1. Software quality control

Using the design-requirements 'Use Case' diagram, the application's functionality was thoroughly tested, step-by-step, ensuring each software component performed as designed.

Example Software Use Case

Use Case
User clicks the 'View Map' button on the Address Form.
System Response
System opens ArcMap and displays the standard mxd. All successfully geocoded addresses for the project are displayed (points, intersections, on/from/to, facility). The street centerline is also displayed with associated street name labels. The data frame display is based upon the City limits extent.

Task 2. On-line Help System



Task 3. On-site Software Acceptance Testing

Task 4. On-site Application Training